

ACCESS 2USB

Quickstart Guide

ACCESS 2USB Portable Diagrams and Descriptions

Figure 1 – Front Panel Diagram



1) **Backlight Key** - Controls operation of the display light. Hold for one second to enable **Power Saving Mode**, where LCD lighting will turn off after ten seconds of non-use. Press the key to turn on light for another ten seconds. Hold for one second to enter **Toggle Mode**, where presses will turn light on/off. Hold for one second to return to default **Always On Mode**.

2) **Directional Cursors & Enter Key** - May be used instead of touch-screen to navigate and select options in the User Interface.

3) **Power Key** - Hold this button down for one second to turn the ACCESS 2USB on or off.

4) **F1 Key** - Used to access the top menu bar.

5) **F2 Key** - This is user programmable; refer to the User Interface section in the product manual for details.

6) **Battery** - Clip on Lithium-Ion battery pack.

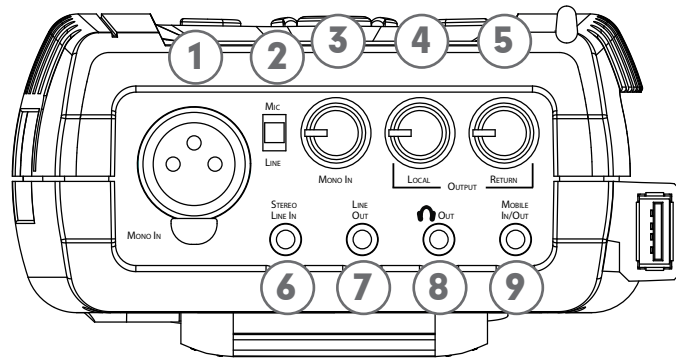


Figure 2 – Top Panel Diagram

- 1) **Mono In** - 3-pin female XLR connector designed to accept a balanced, microphone or line level audio feed. The input level is adjustable via the **Mono In** control. +12V of phantom power may be applied to this input through the **Audio Controls** menu.
- 2) **Mic/Line Switch** - Determines whether the **Mono In** jack is configured to receive a microphone level (-70 to -40 dBu) or line level (-10 to +4 dBu) audio input.
- 3) **Mono In Level Control** - Adjusts the level of **Mono In** audio. These knobs may be extended or retracted by pressing them in.
- 4) **Local Output** - Adjusts the level of locally produced audio at the headphone jack.
- 5) **Return Output** - Adjusts the level of decoded return audio at the headphone jack.
- 6) **Stereo Line In** - 3-conductor 1/8" (3.5mm) connector for attachment of unbalanced stereo input devices.
- 7) **Stereo Line Out** - 3-conductor 1/8" (3.5mm) connector for delivery of fixed level, unbalanced output audio (selectable in software between **Local**, **Return**, or **Both**).
- 8) **Headphone Out** - 3-conductor 1/8" (3.5mm) connector for attachment of stereo headphones with the capability of driving low-impedance headphones.
- 9) **Mobile In/Out** - 3-conductor 1/8" (3.5mm) connector for attachment of a hands-free cellular port. Program audio is sent to this port, and receive audio may be routed to the **Headphone/Line** outputs.

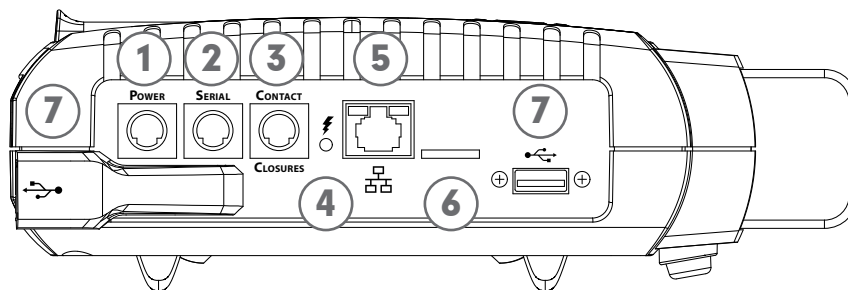


Figure 3 – Side Panel Diagram

- 1) **Power Connector** - 5-pin mini-DIN jack for connection of included AC power adapter. Adapter works from 100-240VAC. Be sure to use only Comrex supplied power adapter.
- 2) **Serial Jack** - 8-pin mini-DIN jack for connection of a serial cable to facilitate ancillary data transfer.
- 3) **Contact Closures** - 9-pin mini-DIN jack is used for connection to four contact closure inputs and outputs.
- 4) **Charge Indicators** - Indicated the battery charging state: **Red** = Charging, **Green** = Fully Charged.
- 5) **Ethernet Port** - 10/100Base-T Ethernet jack for connection to wired IP networks.
- 6) **Micro SD Card Slot** - For future use. Unsupported at this time.
- 7) **USB Ports** - These ports support the included USB Wi-Fi adapter, POTS modem and approved third-party USB 3G/ 4G devices.

Setting up the Hardware

At a minimum, ACCESS needs a source of power, an audio connection and a network or POTS connection.

The ACCESS 2USB comes equipped with two power sources: A small external power supply delivers 15VDC from worldwide AC mains, and a Li-Ion battery pack delivers backup or main power for up to six hours.

The **Mono In** and **Headphone Out** levels are user

adjustable. The **Stereo Line In** connector has a nominal level of -10dBu for connection to consumer level output devices. The **Line Out** connector has a nominal level of -10dBu as well.

The Ethernet connector is a standard 10/100Base-T. A normal Cat5 cable, such as used for a computer, should be connected here.

The USB POTS modem should be used with a dedicated analog telephone line.

Network Device Configuration

The Ethernet port on ACCESS 2USB is enabled and set to DHCP by default.

In order to make a connection on a different network, an Ethernet or USB network device (Wi-Fi, 4G or POTS) must be installed and enabled on the ACCESS 2USB. USB devices can be safely installed or removed when the ACCESS is powered on. IP network devices must have a valid IP address before a call can be made.

To enable your network device, go to **Network > Manage Networks** on the ACCESS. This list displays all devices that have been used with the ACCESS. When you install a compatible device in the ACCESS by plugging it into one of the USB slots, it will appear in this list.

To enable the network device, click the desired entry in the list, and click the **Enable** button on the right-hand side. The status message near the bottom

of the screen should change to **“Installed and Enabled”**.

As shipped from the factory, ACCESS configures new network devices for DHCP, which means it will automatically attempt to obtain an IP address from your network. When the ACCESS obtains a valid IP address, the status will show **“Current address”**, with the current IP address. If you wish to configure the device for a static address, select it in the list and click the **Configure** button.

On the **Locations** tab, press **Add** to create a new location, select **Name** and press **Edit**. Change the name to something specific and press **Save** after each setting change. Select **IP Type** and press **Edit** to change the mode to **Static**. You will then be able to edit the IP address, netmask, gateway and DNS. On the **Settings** tab, edit the **Active Network Location** so it points towards the new location. Press **Apply** when done.



Figure 4 - Manage Networks

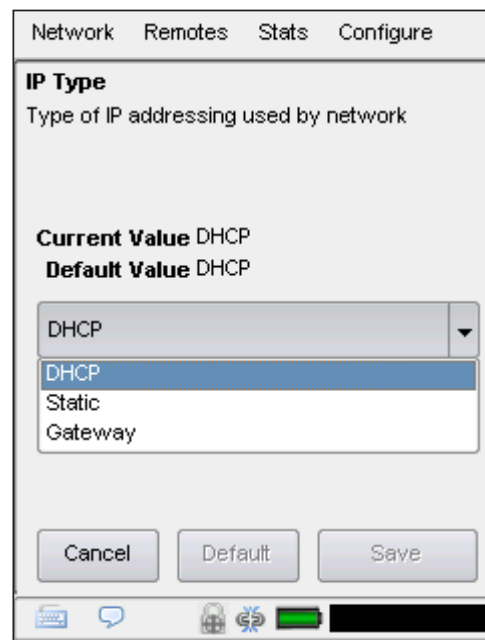


Figure 5 - TCP/IP Configuration

Making a Connection

To make an outgoing connection, you must first create a new remote.

To do so, click **Remotes > Add New Remote**. Enter in a remote name for the connection, the IP Address or phone number of the unit you are calling, the audio connection password (if any is set) and choose a profile to use.

To bring up the on-screen keyboard, click the keyboard icon in the bottom left-hand corner of the screen. Click it again to remove it.

There are several factory profiles available to use for your remote. The following are the most commonly used:

Opus Mono - This is the default choice of profiles for new remotes. It provides low delay, full duplex, 20KHz mono audio channel over a low (48Kb/s) data stream.

3G AAC-ELD - This mode is optimized for use over 3G/4G wireless networks like UMTS or LTE. Because cell networks are asymmetrical (they have higher download speeds), this profile delivers a robust, low delay mono stream in the upload direction, and a low delay, stereo stream in the reverse direction. This stream can be useful to send separate program and cueing channels, as an example.

POTS – This profile must be used when dialing a connection to another codec over POTS

Once you are finished creating your new remote, click **OK**. To start the connection, select the remote from the list and press the **Connect** button. To disconnect, simply press the **Disconnect** button.

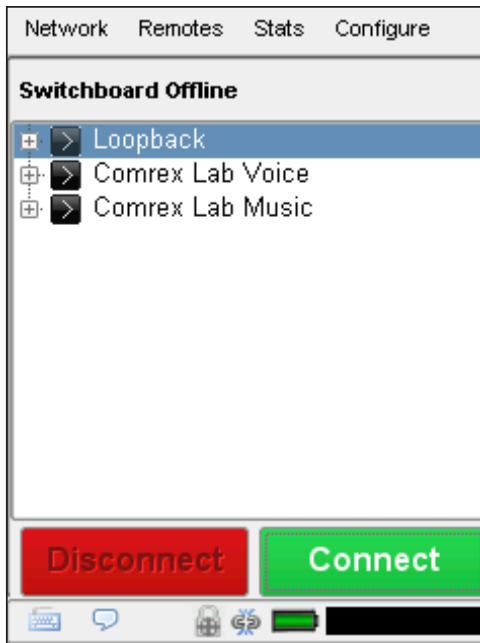


Figure 6 - Manage Remotes

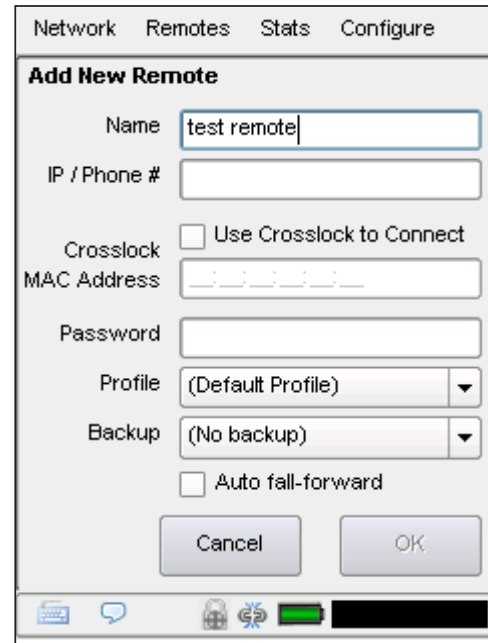


Figure 7 - Add New Remote