



The **FieldLink** sideline audio codec allows for connectivity to a companion **ACCESS NX Portable** codec via the set of three 3.5mm stereo jacks on the front panel of the FieldLink. ACCESS NX Portable users can receive audio from FieldTap callers and send back a dedicated mix-minus feed. This pairing even allows the ACCESS NX to feed program output through the FieldLink using a “Loop-through” jack to feed a PA or recorder. This section of the manual will describe how to configure the companion ACCESS NX codec for “FieldLink Mode”, and will explain the audio flow between the connected devices.

ACCESS NX Portable requires firmware version **5.2-p4** or higher to use *FieldLink Mode*.
Visit the product support page to access the latest firmware upgrades:
www.comrex.com/support/access-nx/#firmware

ENABLING FIELDLINK MODE ON THE COMPANION ACCESS NX

Navigate to the “**Audio I/O**” page using the 3-line menu button on the top left of the ACCESS NX Portable screen, as shown in *Figure 1*. Note: When using an ACCESS NX Mixer, the menu will separate inputs and outputs to their own individual pages. In that case, open “**Audio Outputs**”.



FIGURE 1 - ACCESS NX PORTABLE

From the audio configuration page, open the right side *Options Drawer* using the icon on the top right of the screen, as shown in *Figure 2*. Here you will find a check-box used to enable or disable “**FieldLink Mode**”. When using an ACCESS NX Mixer, this option appears in both the “*Audio Inputs*” and “*Audio Outputs*” pages, and the user’s selection will sync across those screens. Enable FieldLink Mode by checking the box and tap the icon on the upper right again to close the *Options Drawer*.

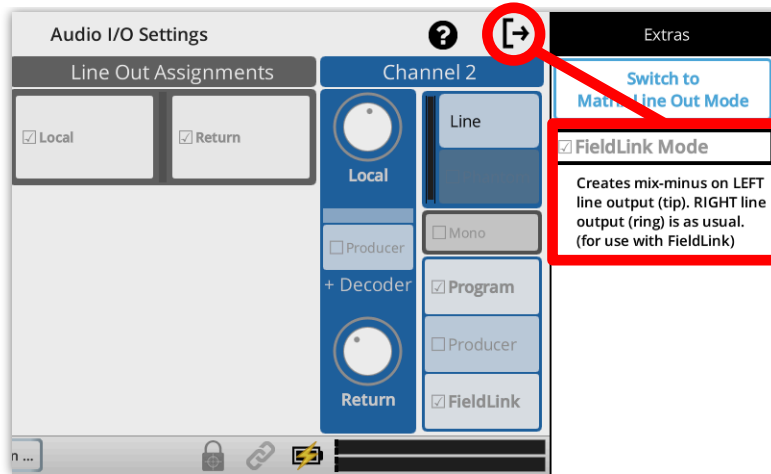


FIGURE 2 - FIELDLINK MODE

Note: FieldLink Mode is not compatible with “**Matrix Line Out Mode**” due to the specialized assignment of left and right channels as described below. Selecting Matrix Mode disables the check-box for “*FieldLink Mode*”, and reverts the ACCESS NX to “*Simple Line Out Mode*”. If using an ACCESS NX Mixer, be sure to disable Matrix Mode in the *Audio Outputs* page; otherwise, the “*FieldLink Mode*” check-box will remain disabled on both the *Audio Inputs* and *Audio Outputs* pages.

AUDIO ASSIGNMENTS

FieldLink Mode configures the 3.5mm “LINE OUT” port on the right side of the ACCESS NX Portable to output a “Mix-Minus” feed on the **left channel (tip)**, and a program feed on the **right channel (ring)**, as shown in *Figure 3*. The left channel mix-minus feed allows sideliners to hear audio sent from the pressbox without their own voice being ‘doubled-back’ to them, and the right channel program audio can be used to feed a PA, recorder or other input as needed. The ACCESS NX user can choose which audio feeds will be included in each of these channels.

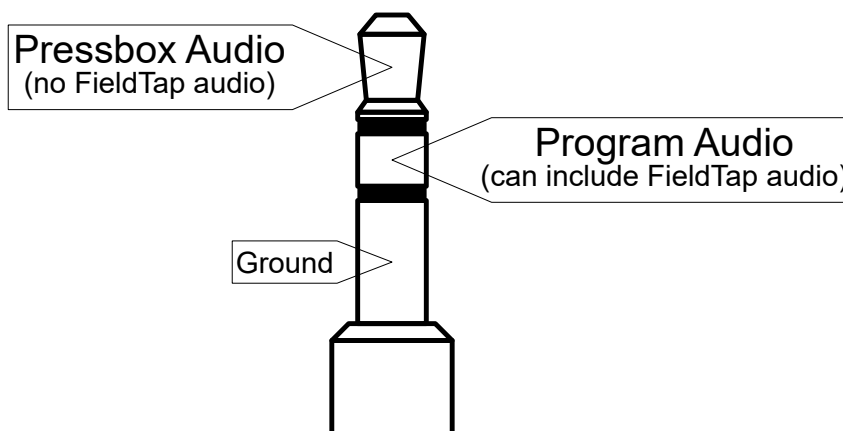


FIGURE 3 - AUDIO FEED TO FIELDLINK

LEFT CHANNEL

When FieldLink Mode is enabled, the ACCESS NX generates a third audio bus, called “**FieldLink**”. This appears underneath the existing buses (**Program** and **Producer**) for each input channel on the *Audio I/O Settings* page, as shown in *Figure 4* (similarly on the *Audio Inputs* page if using an ACCESS NX Mixer).



FIGURE 4 - FIELDLINK AUDIO BUS

The *FieldLink* bus is delivered as the mix-minus feed on the left channel of the LINE OUT port, which the FieldLink then sends to sideline callers on their FieldTap apps. Select the “**FieldLink**” bus option for each channel to include that channel in the audio for callers to hear. Stereo-paired channels are combined as a mono feed when added to the FieldLink bus.

RIGHT CHANNEL

The right channel program feed can be configured as usual, using the “**Line Out Assignments**” in the center of the *Audio I/O Settings* page, as shown in *Figure 5* (similarly on the *Audio Outputs* page if using an ACCESS NX Mixer).

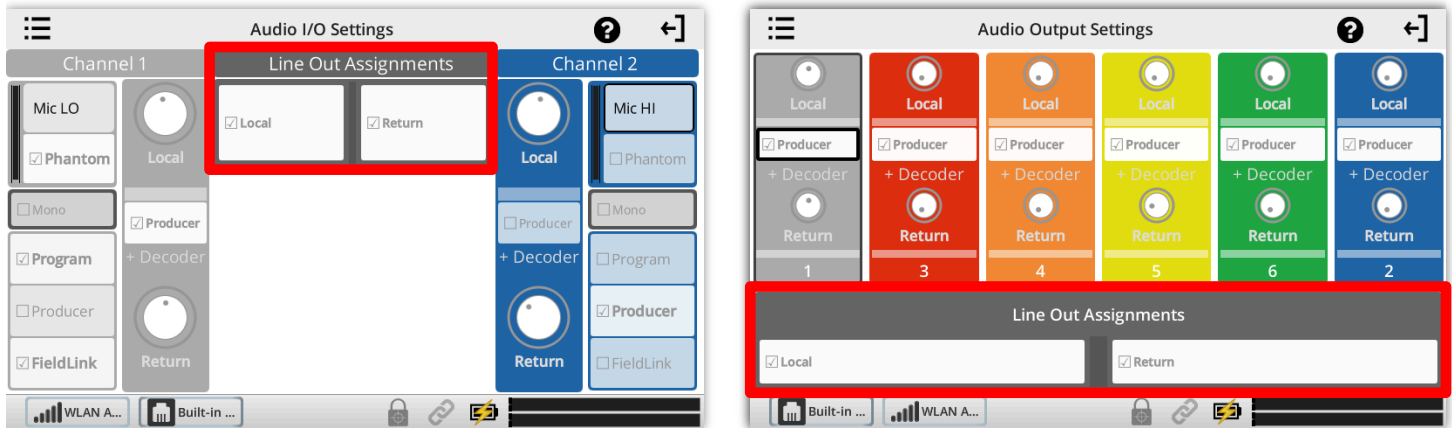


FIGURE 5 - LINE OUT ASSIGNMENTS FOR RIGHT CHANNEL PROGRAM FEED

Select the check-boxes for the audio to be sent on the right channel of the LINE OUT port. **Local** audio (e.g., the pressbox mic) includes any input channel that has been assigned to the “**Program**” bus. **Return** audio (e.g., the studio feed sent to the pressbox) can be included here as well, if checked.

WIRING AND AUDIO FLOW

With FieldLink Mode enabled on the Companion ACCESS NX Portable, audio can now be wired between the two devices using a set of 3.5mm TRS cables (or optionally an TRS-to-XLR conversion cable as described below).

SIDELINER(S) AUDIO

To add FieldTap callers' audio directly to the program feed as is, connect one end of a 3.5mm TRS cable to the "OUT" port on the Front Panel of the FieldLink and connect the other end to the "STEREO LINE IN" port on the Left Side of the ACCESS NX Portable, as shown in *Figure 6*.

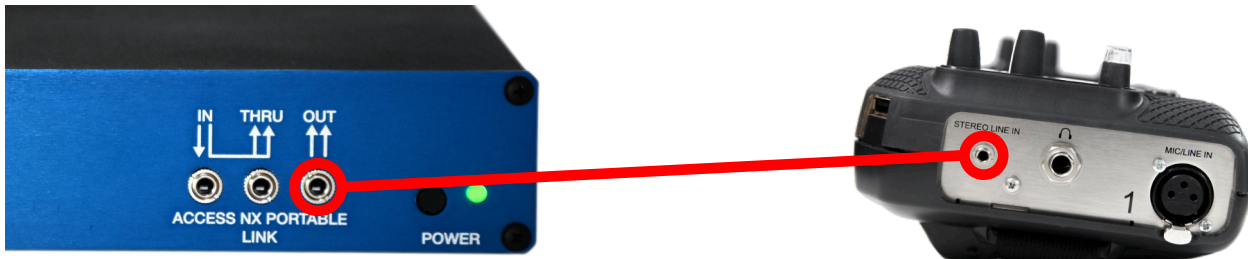


FIGURE 6 - SIDELINER AUDIO

Audio from *Sideliners* calling FieldLink using the **FieldTap** app will now be delivered to the ACCESS NX Portable and added to its program audio along with any other inputs currently assigned to the "Program" bus. FieldTap caller audio wired in this way is always removed from the mix-minus feed delivered on the left (tip) channel of the *LINE OUT* port.

WIRING FOR ADDITIONAL CONTROL OF SIDELINER AUDIO

To gain additional control of audio received from FieldTap callers, an alternate wiring method may be utilized. A 3.5mm TRS-to-XLR conversion cable can connect the "OUT" port on the Front Panel of the FieldLink to any available XLR "MIC/LINE IN" port along the sides of the ACCESS NX Portable, as shown in *Figure 7*.

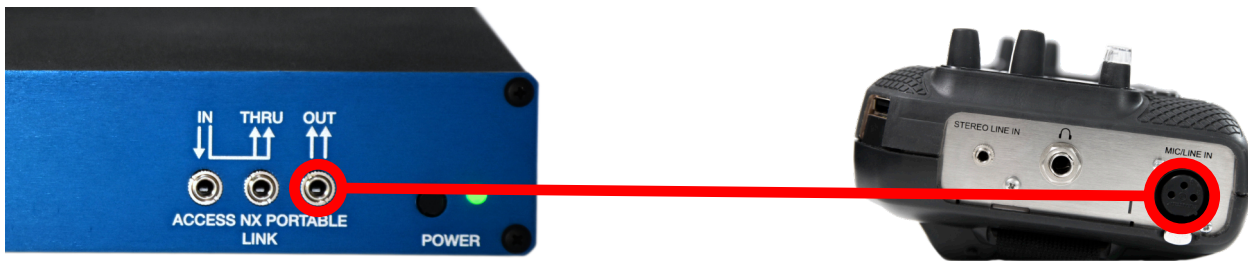
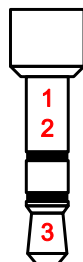


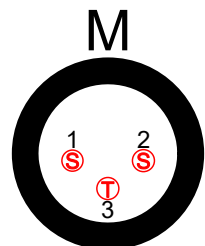
FIGURE 7 - ADDITIONAL SIDELINER AUDIO CONTROL

Note: When wiring Sideline audio into an XLR "MIC/LINE IN" port, it is vital that the corresponding *Audio Input Settings* do not assign that channel to the "FieldLink" audio bus. Doing so would feed FieldTap callers their own audio back to them, defeating the purpose of the mix-minus channel (see "Left Channel" on page 3).

The 3.5mm TRS-to-XLR conversion cable must be pinned as follows:



Sleeve ----- Pin 1
 Sleeve ----- Pin 2
 Tip ----- Pin 3



Put Comrex On The Line.

COMREX

Toll Free in USA: 800-237-1776 • www.comrex.com
 e-mail: info@comrex.com
 19 Pine Road, Devens, MA 01434 USA
 Tel: +1-978-784-1776 • Fax: +1-978-784-1717

PRESSBOX AUDIO: MIX-MINUS

Connect one end of a 3.5mm TRS cable to the “**LINE OUT**” port on the Right Side of the ACCESS NX Portable and connect the other end to the “**IN**” port on the Front Panel of the FieldLink, as shown in *Figure 8*.

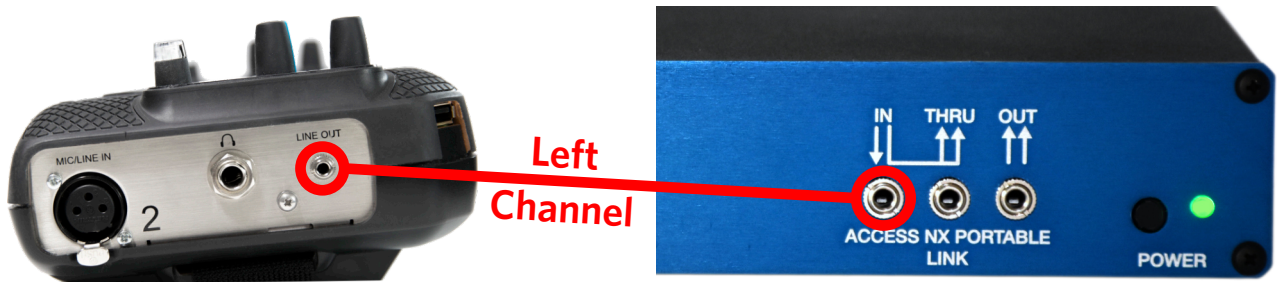


FIGURE 8 - PRESSBOX MIX-MINUS

Locally-mixed audio from the ACCESS NX will now be delivered to the **left channel (tip)** of this cable, including any input channel assigned to the “*FieldLink*” bus. The FieldLink will then deliver this audio to Sideliners via the FieldTap connections. This is a “Mix-minus” feed, meaning FieldTap callers will receive the mixed audio but will not have their own audio delivered back to them. Note: The mix-minus feed will exclude audio from all FieldTap callers; if there are multiple callers, they will not hear each other.

Note: The FieldLink audio bus allows ACCESS NX Portable users to include or exclude any input channel(s) when generating the mix-minus feed for sideliners to receive. Any channel, including stereo-paired channels, can be assigned to the FieldLink bus, which are then combined as a single mono feed on the left channel.

PRESSBOX AUDIO: LOOP-THROUGH

With the same 3.5mm TRS cable connected from the “**LINE OUT**” port on the Right Side of the ACCESS NX Portable to the “**IN**” port on the Front Panel of the Field Link, the ACCESS NX will deliver a more complete program audio on the **right channel (ring)**. This feed includes FieldTap caller audio and is not delivered back to them; it is instead routed directly out of the “**THRU**” port, as shown in *Figure 9*. Note: Audio delivered to the right channel of the “IN” port will be added to both the left and right channels of the “THRU” port.

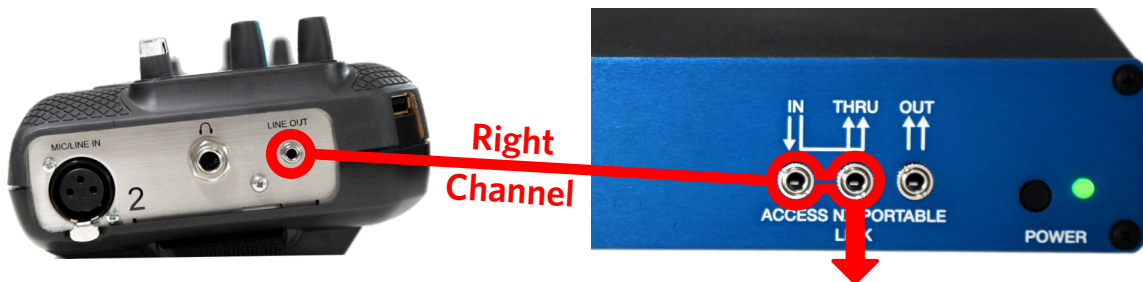


FIGURE 9 - LOOPTHROUGH AUDIO

Connect a 3.5mm TRS cable to the “**THRU**” port on the Front Panel of the FieldLink and connect the other end to a PA, recorder or studio mixer as needed.

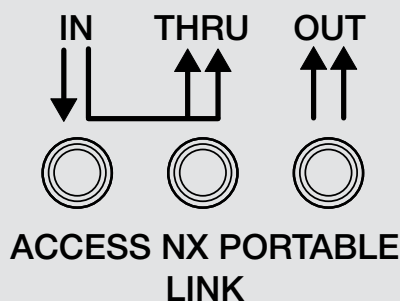
Put Comrex On The Line.

COMREX

Toll Free in USA: 800-237-1776 • www.comrex.com
e-mail: info@comrex.com
19 Pine Road, Devens, MA 01434 USA
Tel: +1-978-784-1776 • Fax: +1-978-784-1717

AUDIO SPLIT

FieldLink Mode on the ACCESS NX Portable generates a specialized pairing of audio channels for use with FieldLink's paired "IN" and "THRU" jacks. The arrow diagram on the front panel of the FieldLink is helpful for visualizing the audio flow of these channels.



The left-most arrow depicts left channel audio being fed into the "IN" port, which is processed by the FieldLink and sent to FieldTap callers.

The arrows flowing from the right side of the "IN" port to the "THRU" port represent the right channel audio being fed into the "IN" port. This audio is not processed by the FieldLink at all, and is instead only fed out of the "THRU" port on both left and right channels, as indicated by the dual arrows.

The "OUT" port is simply a dual mono outbound feed.