


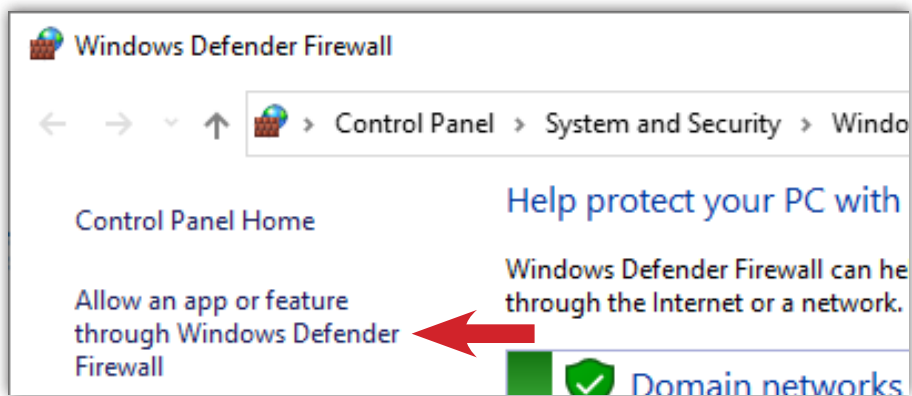


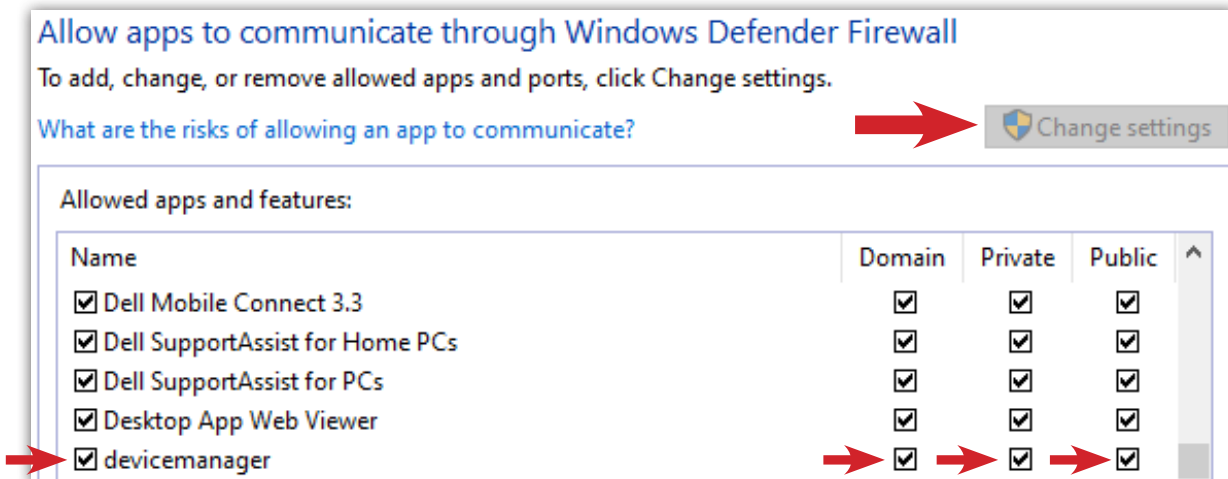
Technote: Enabling Comrex Device Manager in Windows

After downloading the Comrex Device Manager program from the “Products”/“Tools” section of www.comrex.com and installing it on a Windows machine, the following steps can be taken to ensure the application will be allowed through Windows’ security protocols to run properly:

- Navigate to the **Start Menu**  and choose **Settings** 
- Locate the search bar and type “Windows Defender”
- Select  Windows Defender Firewall from the list of results
- Click “Allow an app or feature through Windows Defender Firewall”



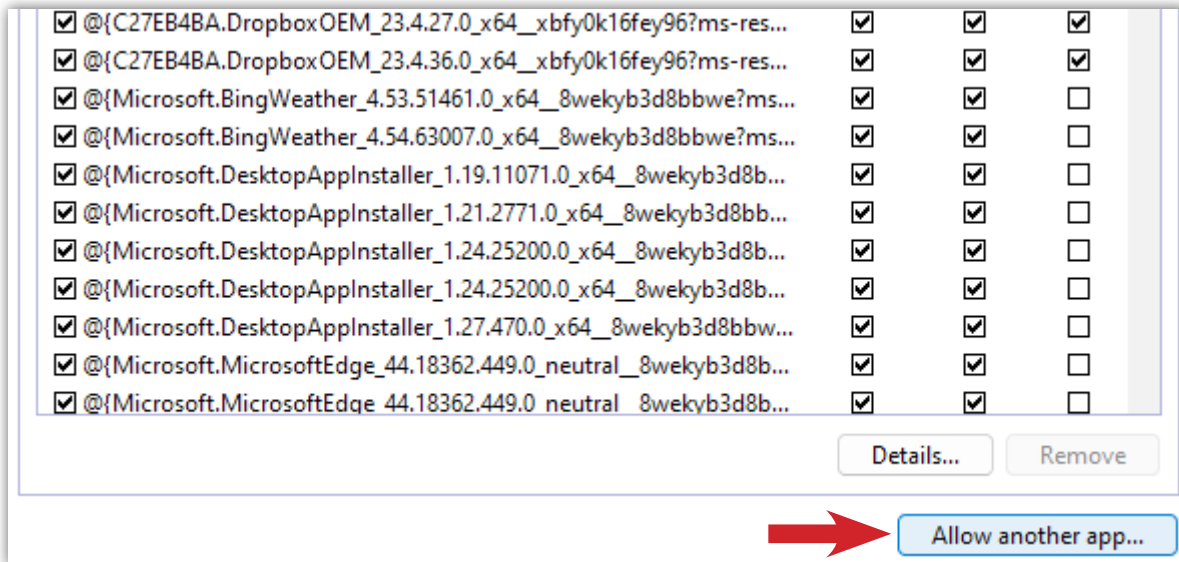
- A window will appear with a list of applications, find “devicemanager” in the list
- Use the “Change Settings” button (if needed) and check every box next to “devicemanager”



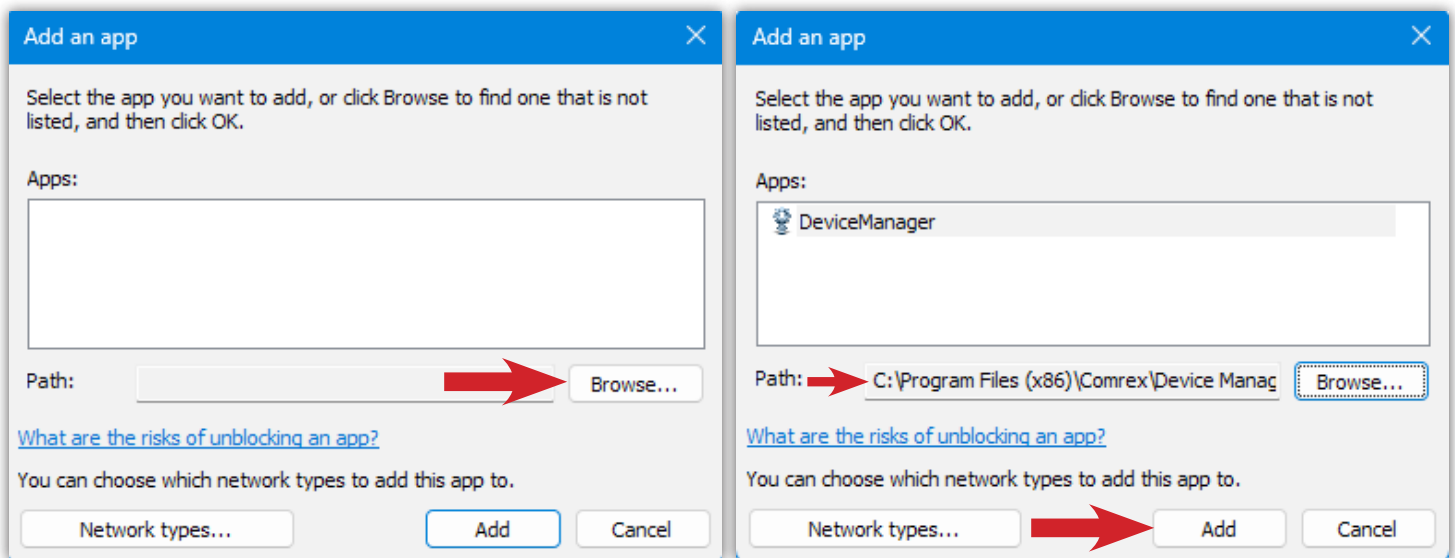
If Comrex Device Manager is already running, close the program and re-open it. As long as the computer in use is on the same network as Comrex devices, they should now be discoverable when using the “Scan for Devices” button.

In some cases the Comrex Device Manager is not automatically added to the list of programs displayed by Windows Defender, requiring instead that the program be added manually within Defender. If “devicemanager” does not appear in the list:

- Use the “Change Settings” button (if needed) then select “**Allow another app...**”



- In the popup that appears click “Browse” to open a File Explorer window.



- Navigate to “DeviceManager.exe”, typically found here:

C:\Program Files (x86)\Comrex\Device Manager

- Select the Device Manager app and click “Add”

This will make the program available in the Windows Defender’s app list as “devicemanager”, enable all available check boxes (as shown in previous steps) before closing Windows Defender. If Device Manager is currently running, close and re-open the program, Comrex codecs should now be found when using the “Scan for Devices” button.